

## STRUCTURE AND FUNCTION OF ENZYMES AND AUXILIARY PROTEINS FROM TRICHODERMA, ACTIVE IN CELL-WALL HYDROLYSIS

Igor Polikarpov

São Carlos Institute of Physics / University of São Paulo (IFSC/USP)

FAPESP Process 2008/56255-9 | Term: Nov 2009 to Sep 2014 | Thematic Project

co-PIs: Munir Salomão Skaf, Valtencir Zucolotto

Lignocellulosic biomass, such as sugarcane bagasse, holds a promise of environmentally friendly bioenergy production in Brazil. However, enzymatic hydrolysis, currently considered a method of choice in biomass saccharification, is hampered by considerable cell-wall recalcitrance. To make this technology sustainable and cost effective, our comprehension of cellulose enzymatic hydrolysis should be significantly improved. Here we propose to conduct systematic structure-functional studies of *Trichoderma cellulases* and auxiliary proteins active in cell-wall degradation using a combination of X-ray protein crystallography, biophysical and biochemical studies, molecular dynamics simulations, statistical coupling analysis aligned with the site-directed mutagenesis and enzymatic assays aiming to obtain in-depth comprehension of cellulose hydrolysis. We plan to contribute toward structural analysis of *Trichoderma reesei* endoglucanases by solving a crystal structure of endoglucanase II (Cel5A), main enzymatically active, but structurally uncharacterized endoglucanase of this important industrial fungus. Moreover, we will contribute toward our knowledge of *Trichoderma cellulases* molecular organization by solving X-ray structures of main *Trichoderma harzianum* endo- and exoglucanases (primarily focusing on Cel7A and Cel5A) and by comparing them with the correspondent *T. reesei*

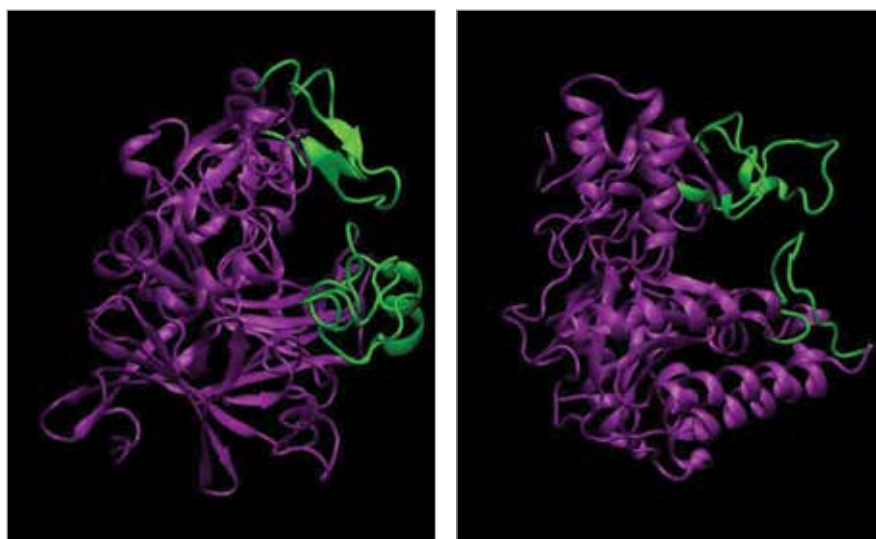


Figure 1. Catalytic core domains of *T. reesei* CBH I (Cel7A, left) and CBH II (Cel6A, right). Loops in green highlight tunnel roofs. Tunnel lengths are 50 Å and 20 Å long (out of the plane of the paper) in CBH I (Cel7A) and CBH II (Cel6A), respectively

enzymes. We also aim to structurally characterize swollenins, non-hydrolytic proteins, shown to enhance cellulose hydrolysis catalyzed by cellulases, and to study thermodynamically its interactions with cellulose. In addition, we will construct chimeric enzymes by fusing of swollenin with the cellulases and will study enzymatic properties of such chimeras. Furthermore, we will conduct systematic molecular dynamics studies of the cellulases and swollenin, and investigate their flexibility by hydrogen deuterium exchange followed by mass-spectrometry. Finally, we will use all these acquired knowledge to modify the proteins using site-directed mutagenesis aiming to better comprehend molecular basis of their function and to produce enzymes and their mixtures with enhanced hydrolytic properties.

## SUMMARY OF RESULTS TO DATE AND PERSPECTIVES

Enzymatic hydrolysis is one of the crucial steps in cellulosic ethanol production, for example from sugarcane bagasse or eucalyptus tree wood. The importance of this process stems from the considerable recalcitrance of biomass to saccharification procedures. To optimize cellulosic bioethanol production and to turn it cost-effective, we need to comprehend a process of enzymatic hydrolysis on the molecular level and therefore, to decipher structures and functions of the enzymes that participate in this process and to understand how main enzymatic components interact with each other during hydrolysis of biomass. As a first step in this direction we advanced with fermentation, purification and characterization of cellulases from the filamentous fungi *Trichoderma harzianum*, *Trichoderma reesei* and *Aspergillus niger* and their structural and enzymatic studies, as well as with structural studies of other hydrolytic enzymes, such as (*R. marinus laminarinase*, *T. reesei* beta-mannosidase, *Xantomonas citri* endoglucanase and lignine oxidases, among others). Our aims is to proceed with the structure-functional studies of glycosyl hydrolases, to improve our understanding of their concerted action during the process of enzymatic hydrolysis and to contribute to the development of enzymatic blends with improved hydrolytic properties, particularly as applied to sugarcane bagasse and eucalyptus tree biomass.

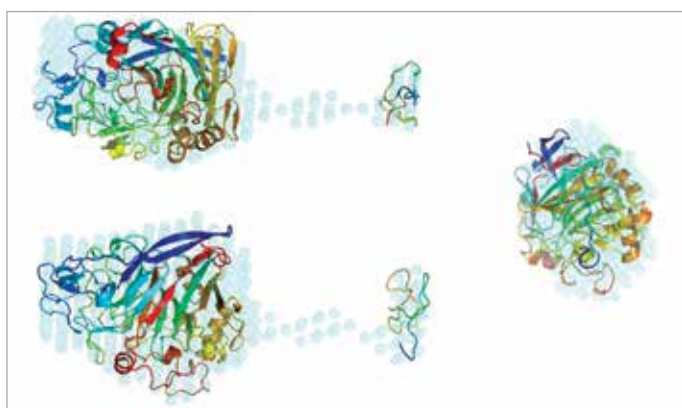


Figure 2. Superposition of small-angle X-ray scattering (SAXS) derived low-resolution envelope of *T. harzianum* CBHI with two separate high-resolution structures: of the catalytic domain of CBHI from *T. reesei* and of its cellulose-binding module (CBM). Three orthogonal views are given

## MAIN PUBLICATIONS

- Watanabe L, Moura RP, Bleicher L, Nascimento AS, Zamorano LS, Calvete JL, Sanz L, Pérez A, Bursakov S, Roig MG, Shnyrov VL, Polikarpov I. 2010. Crystal structure and statistical coupling analysis of highly glycosylated peroxidase from royal palm tree (*Roystonea regia*). *J. Struct. Biol.* **169**:226-242.
- Zamorano LS, Pina DG, Arellano JB, Bursakov SA, Zhadan AP, Calvete JJ, Sanz L, Nielsen PR, Villar E, Gavel O, Roig MG, Watanabe L, Polikarpov I, Shnyrov VL. 2008. Thermodynamic characterization of the palm tree *Roystonea regia* peroxidase stability. *Biochimie.* **90**:1737-1749.
- Nascimento AS, Krauchenco S, Golubev AM, Gustchina A, Wlodawer A, Polikarpov I. 2008. Statistical coupling analysis of aspartic proteinases based on crystal structures of the *Trichoderma reesei* enzyme and its complex with pepstatin A. *J. Mol. Biol.* **382**:763-778.
- Kim KY, Nascimento AS, Golubev AM, Polikarpov I, Kim ChS, Kim SI. 2008. Catalytic mechanism of inulinase from *Arthrobacter sp.* S37. *Biochem. Biophys. Res. Comm.* **371**:600-605.
- Rojas AL, Fischer H, Eneiskaya EV, Kulminskaya AA, Shabalin KA, Neustroev KN, Craievich AF, Golubev AM, Polikarpov I. 2005. Structural insights into the  $\beta$ -xylosidase from *Trichoderma reesei* obtained by synchrotron small-angle X-ray scattering and circular dichroism spectroscopy. *Biochemistry.* **44**:15578-15584.
- Rojas AL, Nagem RAP, Neustroev KN, Arand M, Adamska M, Eneiskaya EV, Kulminskaya AA, Garratt RC, Golubev AM, Polikarpov I. 2004. Crystal structures of  $\beta$ -galactosidase from *Penicillium sp.* and its complex with galactose. *J. Mol. Biol.* **343**:1281-1292.
- Nagem RAP, Rojas AL, Golubev AM, Korneeva OS, Eneiskaya EV, Kulminskaya AA, Neustroev KN, Polikarpov I. 2004. Crystal structure of exo-inulinase from *Aspergillus awamori*: The enzyme fold and structural determinants of substrate recognition. *J. Mol. Biol.* **344**:471-480.

### Igor Polikarpov

Instituto de Física de São Carlos (IFSC)  
Universidade de São Paulo (USP)  
Departamento de Física e Informática  
Av. Trabalhador São-carlense, 400 – Pq. Arnold Schmidt  
CEP 13566-590 – São Carlos, SP – Brasil

ipolikarpov@ifsc.usp.br  
+55-16-3373-8088